



# GS300

## Cellular Monitoring System

### Overview:

The GS300 is a compact cellular transceiver for monitoring industrial equipment that sends live data to the monitoring web site, providing real-time status and alarms. It features 14 digital inputs, 4 digital outputs and 2 analog inputs. In addition to alarming on status changes, the system keeps track of on-time and cycles for the digital inputs; useful for monitoring pump, fan, or compressor run times and duty cycles. Analog inputs can alarm on high or low conditions and are useful for monitoring temperatures, pressures, tank levels or flow rates. The unit monitors input power voltage and provides an optional battery backup which enables the system to alarm on main power voltage level or failure and continue operating without main power.

The easy to use web site updates continuously, displaying location and operating status for all of your monitored equipment. Alarms are immediately displayed on the web site and trigger messages sent to interested personnel in your organization via SMS text messages and emails. Every event is permanently logged in the web site allowing powerful historical analysis using the built in reporting features to give equipment owners detailed insight into the operation and readiness of their equipment fleets.

Proactive service reminders are automatically generated and sent as equipment reaches service intervals based on run-time. Service logs and manuals available over the secure web site reduce paperwork and automate record keeping while providing up to the minute service records for all of your monitored equipment.

### Technical Specifications:

<b>Size</b>	4.0" x 4.3" x 2.3" in.	<b>Power</b>	9 - 32 Volts
<b>Radio</b>	Quad Band GPRS GSM	<b>Battery Backup</b>	Internal
<b>Transmit Power</b>		<b>Current Consumption</b>	
850 / 900 MHz	Class 4, 2 Watts	Idle	65 mA
1800 / 1900 MHz	Class 2, 1 Watt	Transmit, Average	250 mA
<b>Digital Inputs</b>	14	Peak	2.1 A
<b>Digital Outputs</b>	4	<b>Temperature</b>	
<b>Analog Inputs</b>	2, 0-5 Volt or 0 to 20 mA	Operating	-30°C to +70°C
<b>Connectors</b>	5mm Terminal Blocks	Storage	-40°C to +85°C
<b>GSM Connector</b>	SMA	<b>Max. Humidity</b>	95% Non-Condensing

### Features:

Easy to install cellular monitoring system. A variety of optional enclosures and mounting options provide for a clean and professional installation. Unit includes a quad magnet bracket for quick mounting and templates for mounting with included standoffs.

Advanced power management employing low power idle modes enable the unit to operate in solar powered applications with minimal power draw.

No software to buy, install or maintain; all mapping and data features are accessible over the secure web site from any computer with Internet access.

### Radio Agency Approvals:

<b>FCC</b>	Part 15 Part 22 Part 24
<b>GCF</b>	Version 3.21.1
<b>PTCRB</b>	Version 3.7.1
<b>Industry Canada</b>	Yes
<b>CE Mark</b>	Yes
<b>RoHS Compliant</b>	Yes
<b>Emark</b>	Yes

### Each Complete Monitoring System Includes:



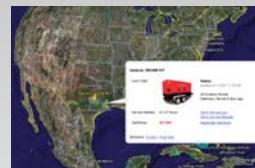
#### Digital Cellular Monitoring Unit:

- 14 Digital Inputs
- 4 Digital Outputs
- 2 Analog Inputs
- Connected 24x7x365



#### Low Profile or High Gain Cellular Antenna:

- 4" (Low Profile)
- 12.4" (High Gain)
- 12' Cable Length
- Magnet Mount



#### Mapping & Reporting:

- Web Accessible
- Graphical Map Overview
- Simple User Interface
- Run Service Reports
- Monitor Equipment Use



#### Alarming & Notifications:

- Equipment Status Change
- Equipment Service Needed
- SMS Text Message
- BlackBerry, PDA Message
- Email