



## GS2000

32 I/O Points in a Modbus Client/Server

18 Analog/Universal Inputs  
8 Discrete (relay) Outputs  
4 Analog Outputs  
2 Pulse/Discrete Inputs  
RTU Gateway

Scheduling  
Astronomical Clock  
Data Logging  
Event Notification

## GS2000 RTU for Web Based Remote Monitoring

Generating Solutions' GS2000 provides web based remote monitoring for discrete sensors and Modbus RTU devices. GS2000 features 18 universal inputs configurable for analog or discrete input, plus 8 dry contact relay outputs, 4 4-20mA analog outputs, and 2 pulse counting inputs.

GS2000 includes powerful web based features, including:

- Data logging and event logging, trending
- Email notification and email data log delivery
- Weekly and on-demand real time scheduling
- Astronomical clock and time/date clock
- Programmability using PL/i structured language
- SNMP v2 agent for Get/Set access to data points
- SNMP trap generation based on rules
- Template rule generation for traps, emails, output triggers
- Modbus TCP client and server concurrently
- Built-in gateway to Modbus RTU
- Integral web server with Flash file system
- User designed web pages with CGI access to data points
- Web based configuration and monitoring
- Cell phone friendly event notification capability
- Dynamic DNS support
- DNS host lookup, DHCP
- FTP data file access & firmware upgrades
- Telnet console session for account management
- Web client for server driven remote monitoring

## Features of GS2000

- Web based configuration & operation
- Ethernet 10/100BaseT protocol support  
HTTP • Modbus TCP • SNMP
- RS-485 protocol support
  - Modbus RTU Master
  - LED indicators for TX, RX, error
- User web pages
- Data logging, scheduling, email notifications
- User programmable
- 18 Analog/universal inputs (16 universal + 2 analog only)
  - 0-10VDC, Thermistor, dry contact
  - Software selectable input type (16 channels)
  - 0.1% reference, up to 16-bit resolution
  - Continuously self-calibrating sigma-delta converter
- 4 Analog outputs
  - 4-20mA (0-20mA)
  - 8-bit resolution
- 8 Discrete outputs
  - Form A relay, 5A @ 120VAC
  - HOA switches & status indicators
- 2 Discrete inputs
  - TTL to 24VDC
  - Pulse count frequency input
  - Totalizing count input
- Powered by 18-30VDC or 24VAC 50/60 Hz
- DIN rail mounting, 100mm H x 155mm W x 60mm D
- FCC Class A, CE Mark

[www.generatingsolutions.net](http://www.generatingsolutions.net)



The OnlineSiteWatch Web Portal provides a central site to monitor all of your remote sites. Access the central site from anywhere in the world. OnlineSiteWatch will send you emails, or text messages to your cell phone, when an event you want to know about has occurred.

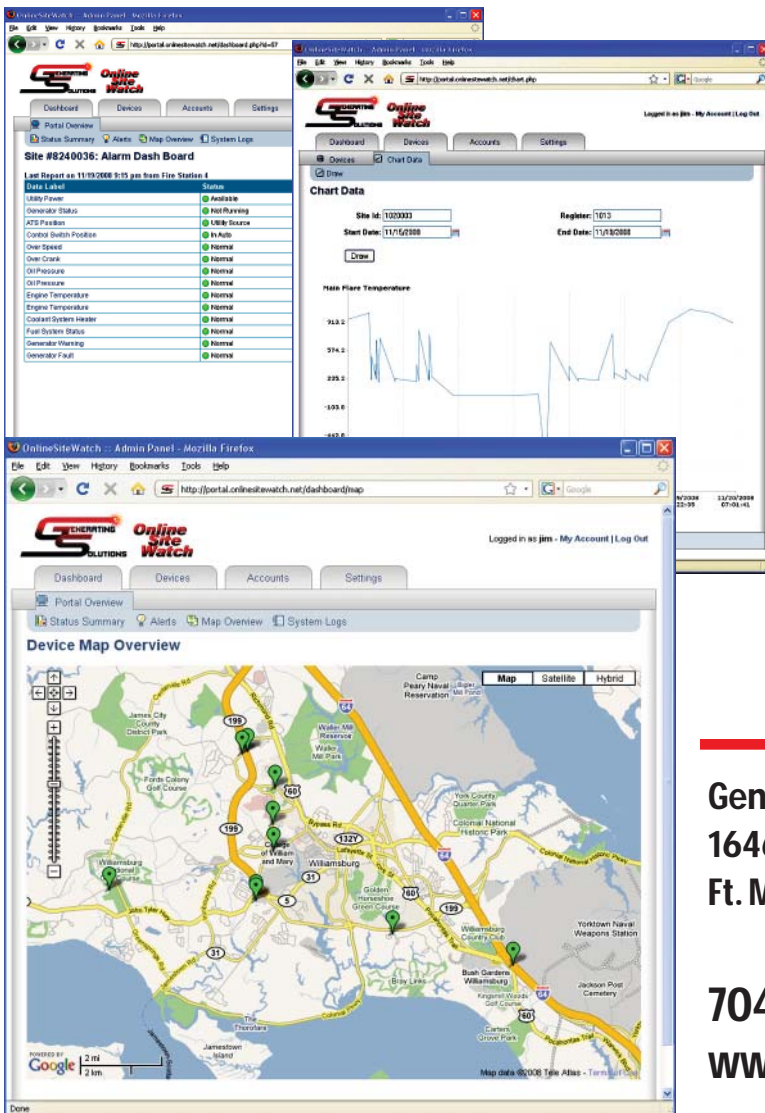
### How does the Web Portal work?

You will receive your own subdomain and account login on one of our servers. Once devices are commissioned, they will begin reporting data, and sending you notifications when there is an event you want to know about. You may have multiple users, and you may direct notifications of certain events to certain users or user groups.

The devices will continuously monitor data and periodically report data to the server. When an event occurs, the device will contact the server immediately. The server will then check its database to see who wants to know about this event. The server will send notifications to cell phones or email addresses.

Applications include stationary and mobile equipment. Mobile capabilities include GPS tracking and geo-fencing. In addition to other events, you will receive a notification if the equipment leaves its assigned location. When you move equipment to a new location, you simply log in and tell the server that this is where it should be now. You can check the location of your equipment at any time by logging in and viewing the Google Maps powered dashboard.

- Optimized for remote alarm monitoring and notification
- User configurable alarms and notification messages
- Multiple users and multiple user groups for notifications
- Notification via email, text message, voice phone calls
- Voice calls use advanced text to speech technology
- Alert escalation when alert requires acknowledgement
- Map and annunciator views of system summary
- Daily status reports and online history log
- Notification of unresponsive devices
- Data collection for trending
- CSV data file export, online graph plotting
- Connect via wired Internet, cellular GSM/GPRS, satellite



**Generating Solutions**  
1646 West Highway 160, Suite E  
Ft. Mill, South Carolina USA 29708

**704-904-9461**  
**www.generatingsolutions.net**