

GS1500

RTU for Web Based Remote Monitoring



GS1500

14 I/O Points in a
Modbus Client/Server

12 Analog/Universal Inputs
2 Discrete (FET) Outputs
2 Pulse/Discrete Inputs
(shared analog/universal)
RTU Gateway

Scheduling
Astronomical Clock
Data Logging
Event Notification

GS1500 RTU for Web Based Remote Monitoring

Generating Solutions' GS1500 provides web based remote monitoring for discrete sensors and Modbus RTU devices. GS1500 features 12 universal inputs. Two of the universal inputs support pulse counting, either rate or totalizing. Two FET outputs may drive small DC loads directly, or operate larger external relays.

GS1500 includes powerful web based features, including:

- Data logging and event logging, trending
- Email notification and email data log delivery
- Weekly and on-demand real time scheduling
- Astronomical clock and time/date clock
- Programmability using PL/i structured language
- SNMP v2 agent for Get/Set access to data points
- SNMP trap generation based on rules
- Template rule generation for traps, emails, output triggers
- Modbus TCP client and server concurrently
- Built-in gateway to Modbus RTU
- Integral web server with Flash file system
- User designed web pages with CGI access to data points
- Web based configuration and monitoring
- Cell phone friendly event notification capability
- Dynamic DNS support
- DNS host lookup, DHCP
- FTP data file access & firmware upgrades
- Telnet console session for account management
- Web client for server driven remote monitoring

Remote Monitoring for Discrete Sensors
Remote Monitoring for Anything Modbus
Local Alarm Responses
Web Based Reporting & Notifications

Features of GS1500

- Web based configuration & operation
- Ethernet 10/100BaseT protocol support
HTTP • Modbus TCP • SNMP
- EIA-485 protocol support
Modbus RTU Master
- User web pages
- Data logging, scheduling, email notifications
- Programmable
- 12 Analog/universal inputs
 - 0-10VDC, Thermistor, dry contact
 - Software selectable input type
 - 10-bit resolution
 - Pulse input capability on 2 channels
- 2 Discrete outputs
 - Open drain FET, current sink 1A @ 24VDC
- Powered by 10-30VDC or 24VAC 50/60 Hz
- DIN rail mounting, 100mm H x 70mm W x 60mm D
- FCC Class B, CE Mark

www.generatingsolutions.net



The OnlineSiteWatch Web Portal provides a central site to monitor all of your remote sites. Access the central site from anywhere in the world. OnlineSiteWatch will send you emails, or text messages to your cell phone, when an event you want to know about has occurred.

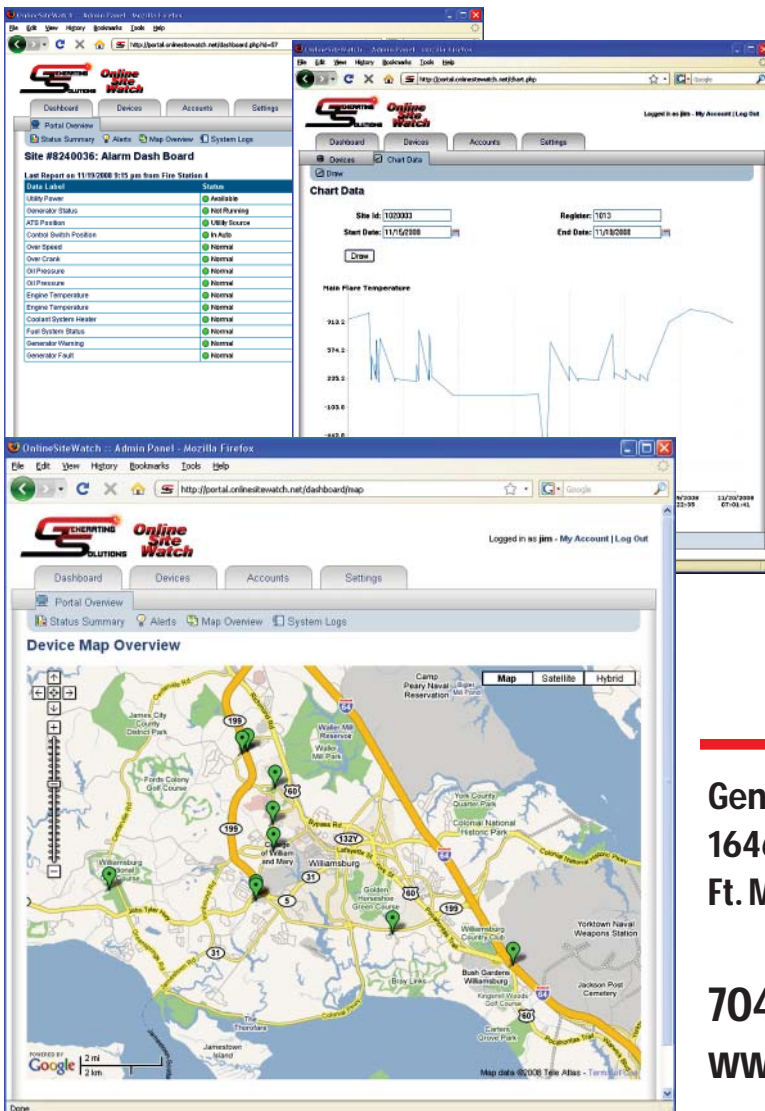
How does the Web Portal work?

You will receive your own subdomain and account login on one of our servers. Once devices are commissioned, they will begin reporting data, and sending you notifications when there is an event you want to know about. You may have multiple users, and you may direct notifications of certain events to certain users or user groups.

The devices will continuously monitor data and periodically report data to the server. When an event occurs, the device will contact the server immediately. The server will then check its database to see who wants to know about this event. The server will send notifications to cell phones or email addresses.

Applications include stationary and mobile equipment. Mobile capabilities include GPS tracking and geo-fencing. In addition to other events, you will receive a notification if the equipment leaves its assigned location. When you move equipment to a new location, you simply log in and tell the server that this is where it should be now. You can check the location of your equipment at any time by logging in and viewing the Google Maps powered dashboard.

- Optimized for remote alarm monitoring and notification
- User configurable alarms and notification messages
- Multiple users and multiple user groups for notifications
- Notification via email, text message, voice phone calls
- Voice calls use advanced text to speech technology
- Alert escalation when alert requires acknowledgement
- Map and annunciator views of system summary
- Daily status reports and online history log
- Notification of unresponsive devices
- Data collection for trending
- CSV data file export, online graph plotting
- Connect via wired Internet, cellular GSM/GPRS, satellite



Generating Solutions
1646 West Highway 160, Suite E
Ft. Mill, South Carolina USA 29708

704-904-9461
www.generatingsolutions.net